

Debra Jane Seltzer

RoadsideArchitecture.com

aka *roadarch.com*

buildings, signs, statues, and more
from the 1920s-1970s



A Neon Roadtrip: Gas, Food, and Lodging



“Mitzy” (Mitsubishi): 1996-2006

St. Ignace, MI



“Sparkle” (Chevrolet Astro): 2006-2020



Youngstown, OH
(at a Sparkle supermarket)



Rochester, NY



Ponce Inlet, FL

More “Sparkle”

Bliss, ID



Oxnard, CA

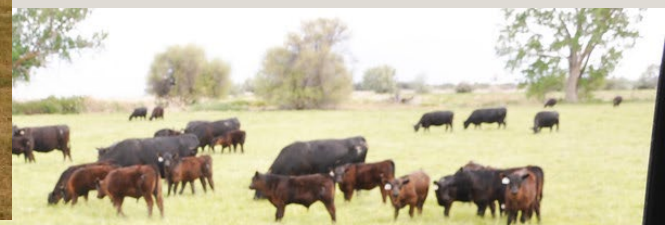


Farmington, NM

“Gator” (Chevrolet Express): 2020-present



Pauls Valley, OK



Provo, UT



My Roadtrip Buddies



Virginia Beach, VA



Fort Benton, MT

More Roadtrip Buddies

Livingston, IL



Austin, MN



Fill 'Er Up – Gulf Oil

former station (Midway, GA; station from 1930s, sign ~1940s)



More Gulf



former Gulf station
(Quincy, FL; station from 1952)

former station (Sapulpa, OK)



More Gulf

former Gulf station (Waco, TX; station built 1929; restored ~2014)



1940s vintage image

Magnolia Petroleum Company (later Mobilgas)

Magnolia Building - replica sign from 1998
(Dallas, TX)



original sign from 1934 (Dallas, TX)



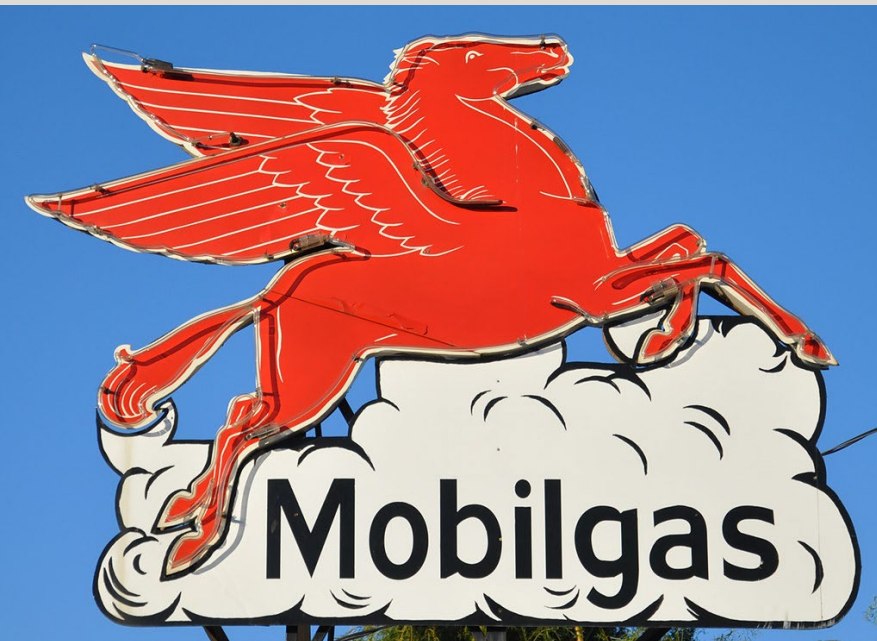
More Magnolia/Mobilgas (later Mobil)

former Magnolia Oil station (San Antonio, TX; built 1929)



More Mobilgas

former Gilmore station (restored as Crossett's Mobil) (Ellensburg, WA)



private collection (Jacksonville, TX) [gone]



Shell



operating Shell station; sign from 1933 (Cambridge, MA)

private collection (Elk City, OK)



GLOCO (Good Luck Oil Company)

former GLOCO station
– built 1939 (Dallas, TX)

3 buildings with this design
– other two demolished



Stinker

Stinker station (Boise, ID; photo John Margolies 1980)



Stinker replica "Farris" sign (Lindon, UT)



Others

former More Mileage Station from 1938 (Jennings, LA)



Claude Neon Federal



Bob's Oil Co. station built 1956; sign 1950s/1960s (Grand Forks, ND)

former Flying A station built 1936 (Truckee, CA)



former **Veltex** station (Boise, ID)



Jay's Sinclair station built 1948
(Tremonton, UT)



former **Conoco** station built 1936 (Shamrock, TX); vintage photo 1940s



Haffner's Gasoline (Lowell, MA)



Speedy's Convenience Stores (St. Joseph, MO)



Space Station Gas (Steamboat Springs, CO)

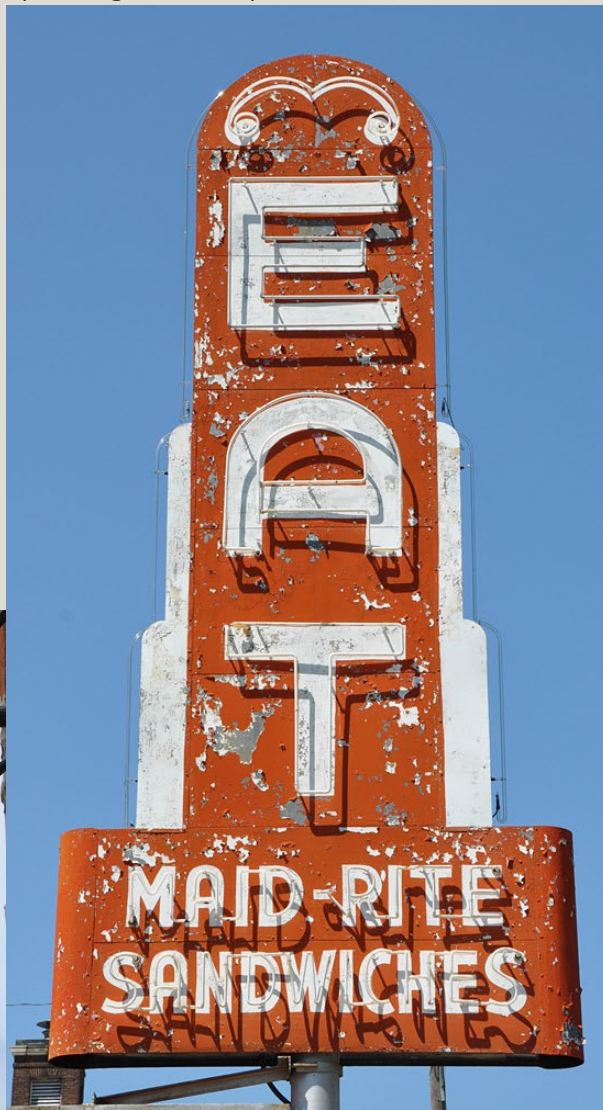


Let's Eat!

Lantern Pub (Ashley, IL)



Maid-Rite built 1946
(Lexington, MO)



K's Hamburger Shop sign 1940s
(Troy, OH)



Al's Hamburgers (Green Bay, WI)



Blue Plate (San Francisco, CA)

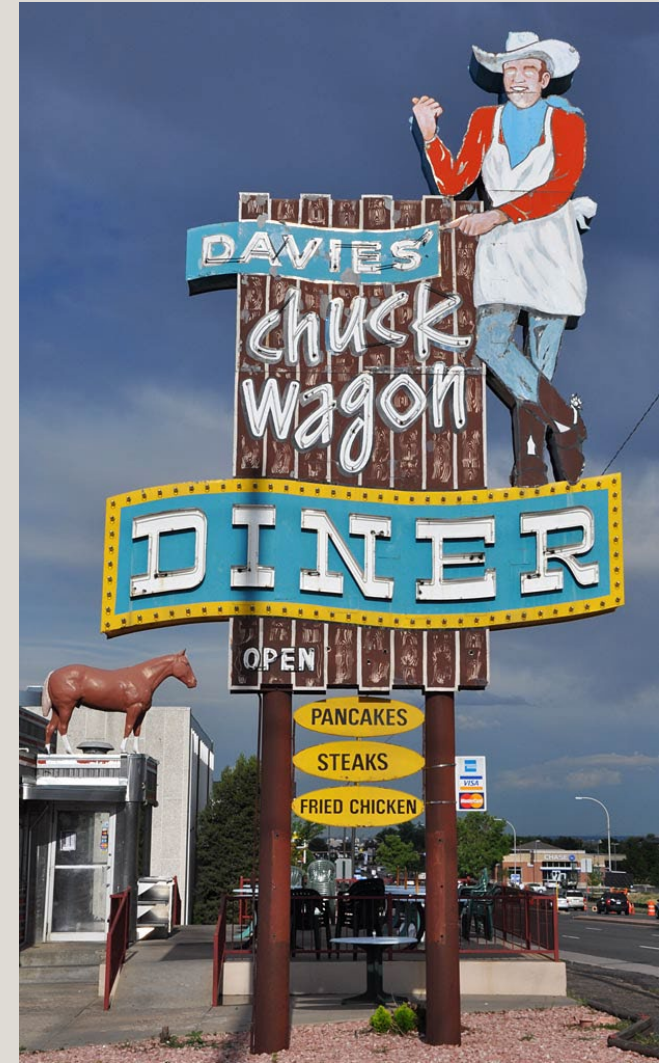


Diners

Zip's Diner – O'Mahony built 1954 (Dayville, CT)



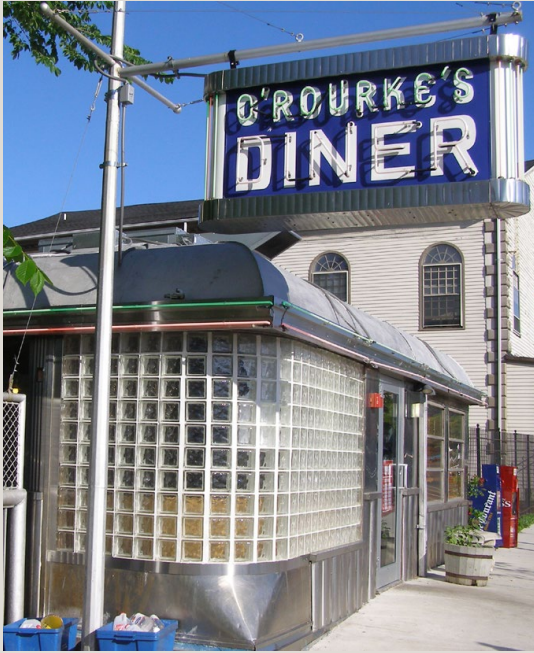
Davies' Chuck Wagon Diner – Mountain View built 1957 (Lakewood, CO)



Sugar Shack Diner – Valentine built 1953 (Rudyard, MT)



O'Rourke's Diner – Mountain View
built 1946 (Middletown, CT)



Aero Diner – Bramson built 1958 (North Windham, CT)



Al's Diner – Master built late 1950s (Chicopee, MA)



**Nite Owl Diner – DeRaffele
built 1956 (Fall River, MA)**



Club Diner – Worcester built 1933 (Lowell, MA)



**Mickey's Diner – O'Mahony built 1937
(St. Paul, MN)**



Rosebud Diner – Worcester built 1941 (Somerville, MA)



**West Taghkanic Diner – Mountain View
built 1953 (Ancram, NY)**



**Chuck Wagon Diner – Mountain View built
1956 in Champaign, IL (now Princetown, NY)**



**Tick Tock Diner – Kullman built 1994, replaced
Silk City built 1949 – sign from then (Clifton, NJ)**



**Bendix Diner – Master built 1947
(Hasbrouck Heights, NJ)**



Blue Comet Diner – Mountain View
built 1957 (Hazleton, PA)



Blue Star Diner – Manno built
1958 (Newport News, VA)



Summit Diner – Swingle
built 1960 (Somerset, PA)



Melrose Diner – Paramount
built 1956 (Philadelphia, PA)



Holiday Inn

first sign – built 1952
(Memphis, TN) [gone]



American Sign Museum
(Cincinnati, OH)



Henry Ford Museum
(Dearborn, MI)



More Holiday Inn



Holiday Inn Copycats

Rest Haven Court – sign built 1953 (Springfield, MO)



Munger Moss Motel – sign built 1955 (Lebanon, MO)



More Holiday Inn Copycats

Vacation Motor Hotel – built 1954 (Clarksville, TN)



Mitchell Inn

(Houston, TX) [postcard, gone]



More Holiday Inn Copycats

Westward-Ho Motel
(Clovis, NM)



Holiday Bowl – built 1958
(Augusta, KS)



More Holiday Inn Copycats

Town Motel - built 1951
(Birmingham, AL)



Holiday Motel
(Jeffersonville, IN)



Mother Earth Motor Lodge –
sign built 2017 (Kinston, NC)

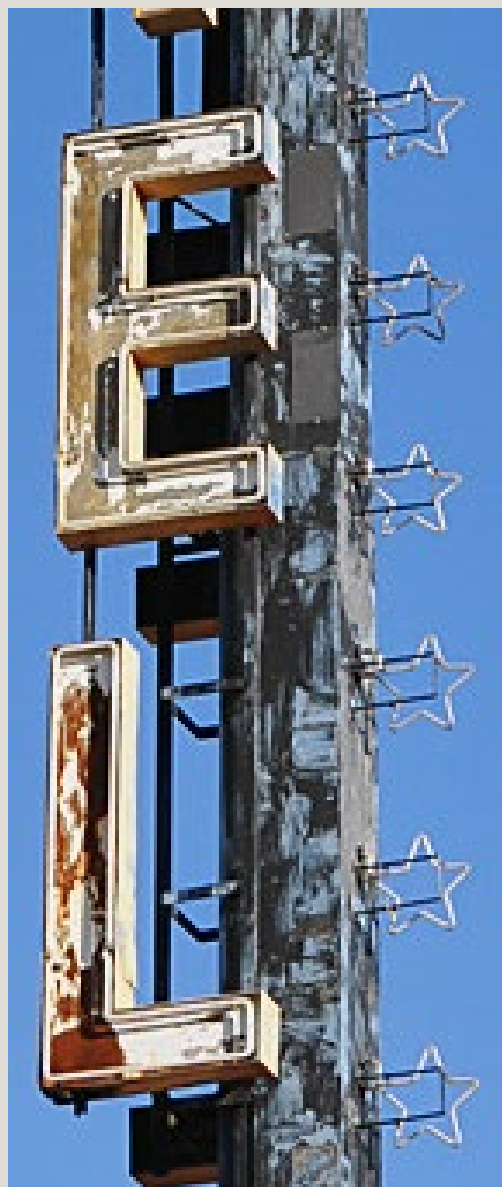


Motel/Hotel Extension Signs

Westways Court Motel (Delta, CO)



More Motel/Hotel Extension Signs



U.S. Motel
(Las Vegas, NV)



More Motel/Hotel Extension Signs



Trail's End Motel (Dubois, WY)

Trout Lodge (Naches, WA)



Motel/Hotel Scaffold Signs

El Rancho Motel – built 1947 (Barstow, CA)



Androy Hotel (Hibbing, MN)



More Motel/Hotel Scaffold Signs

Motel Du Beau - sign from 1934 (Flagstaff, AZ)



Hotel Baxter – sign from 1929 (Bozeman, MT)



My Stuff

- **Website**

RoadsideArchitecture.com (shortcut: roadarch.com)

The logo for RoadsideArchitecture.com, featuring the text "RoadsideArchitecture.com" in a bold, sans-serif font. "Roadside" is in black, "Architecture" is in yellow, and ".com" is in black. The text is set against a black rectangular background with two horizontal yellow lines below it.

- **Blog**

roadarch.blog

The logo for RoadArch.com companion, featuring the text "RoadArch.com companion" in a black, cursive script font, set against a light blue rectangular background.

- **Instagram**

roadarch_com



- **Flickr**

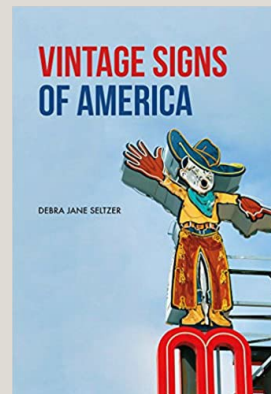
flickr.com/photos/agilitynut

flickr.com/photos/roadsidenut

The Flickr logo, featuring the word "flickr" in a blue, lowercase, sans-serif font, with the "r" in pink.

- **Book**

Vintage Signs of America



- **Publication**

Society for Commercial Archeology (SCA)

- **Email**

roadarch@outlook.com